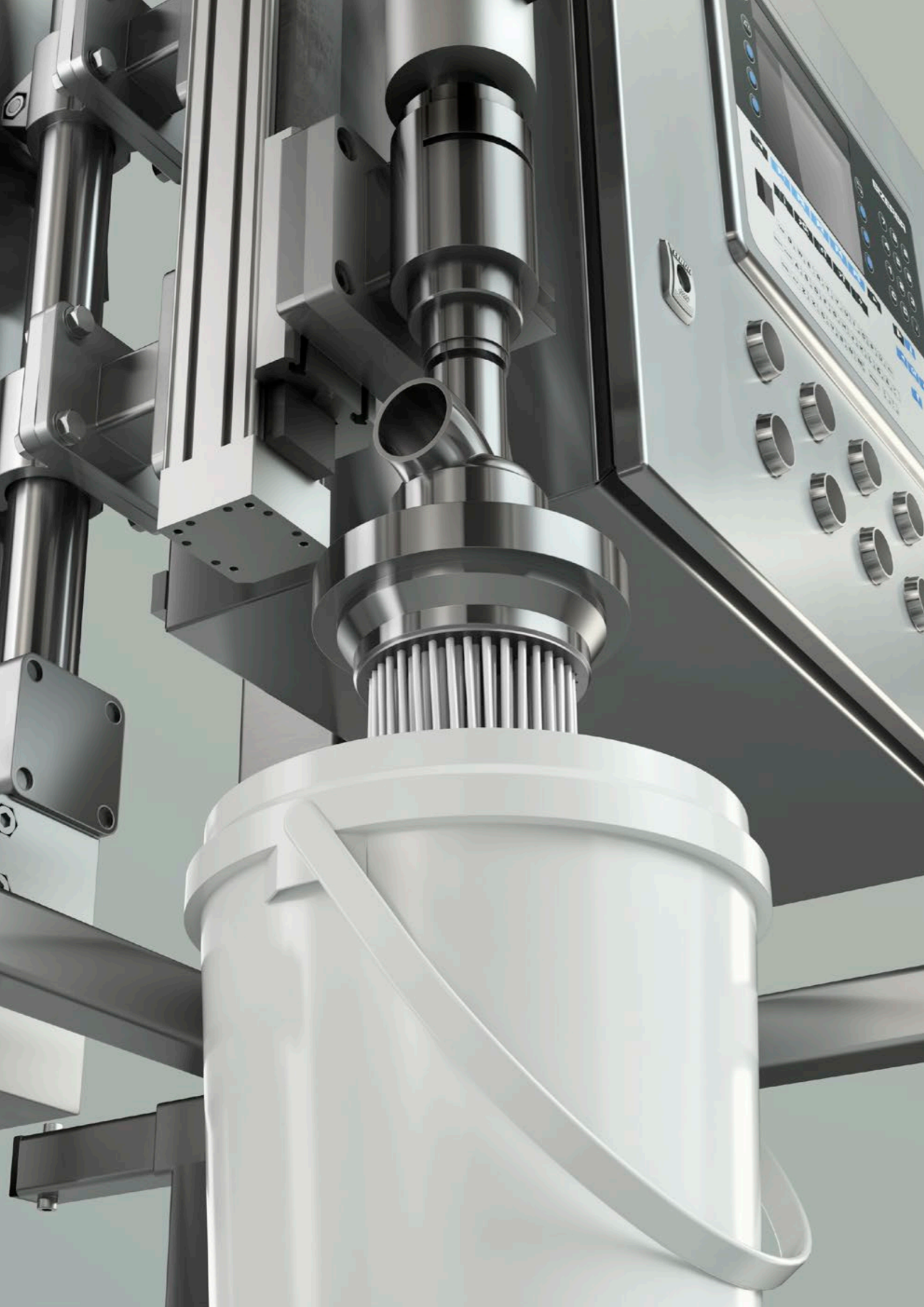




FSL filling systems

Modular precision



BIZERBA

OPEN
WORLD



Our experience sets standards

We are a family-owned company guided by a commitment to tradition, sustainability and responsibility. Nowadays, based on our core competence of slicing and weighing technology, we offer our customers the industry's largest and most unique range of products and solutions as hardware, software and services, anywhere in the world.

As a global acting technology company, we allow ourselves to be led by the aim and the requirement to achieve

the best possible results in terms of ergonomics, hygiene, safety and efficiency. We believe we have a role to play in shaping our markets, and are continually setting new industry standards. In close collaboration with our customers and against a backdrop of technological advancement, we are working to improve our products on a daily basis – resulting in innovations which become new standards.

In order to continue to live up to these requirements, we focus on the highest possible quality standards

and internationally recognized technology standards in our development and manufacturing work. This is how we best support our customers in achieving maximum efficiency and profitable growth.

Our experience sets standards.
That's what matters to us.
Bizerba.



Tailor-made solutions

Our FSL series offers you the perfect solution for your company. Benefit from a modular system which allows individual and industry-specific production. Maximum flexibility for precise and safe results. Even in the Ex zone.

Decades of experience and profound industry knowledge make us a unique solutions provider and partner you can rely on. We offer everything from a single source. And it starts with individual advice. Based on this we plan and implement your tailor-made filling system consisting of excellent, self-developed and manufactured modules. We are happy to advise you regarding financing options. After the installation carried out by our specialists, our professional service experts will gladly assist you.

The fully and semi-automatic filling systems of our FSL series adapt to your company layout. Even in an extreme or sensitive production environment they fulfill the highest standards in terms of technology, ergonomics, hygiene and safety. Combined with our high quality industrial terminals and the intelligent software platform BRAIN2 you can design your production processes in an effective and reliable manner. A variety of interfaces enables an easy integration of our FSL models in your production and IT network.

FSL-EVO S

Our fully automatic filling system FSL-EVO S optimizes your production processes. Its high-end modular system offers you maximum flexibility: In terms of the system's design (L or U-shape), container type and size as well as the procedure of filling your high quality and sensitive products (see p. 10).

You benefit from efficient and to-the-gram weighing, gentle dosing and safe packaging even of flammable, foaming or corrosive liquids. Optionally, your products can be fully automatically sealed, closed and labeled with variable data. Easy handling of the FSL-EVO S ensures minimum changeover times. Even cleaning of the system is efficient and easy. Ideal for a smooth workflow.

By setting up a container buffer section, the filling system largely runs autonomously. Your benefit: Possible operating errors resulting from incorrect settings can be minimized. Via the industrial terminal iS50 you reliably and efficiently control the verifiable filling process. Combined with platform scales of the iL Economy series the FSL-EVO S becomes the perfect filling system.



Function labeling

You can optionally label your containers automatically or manually with variable data.



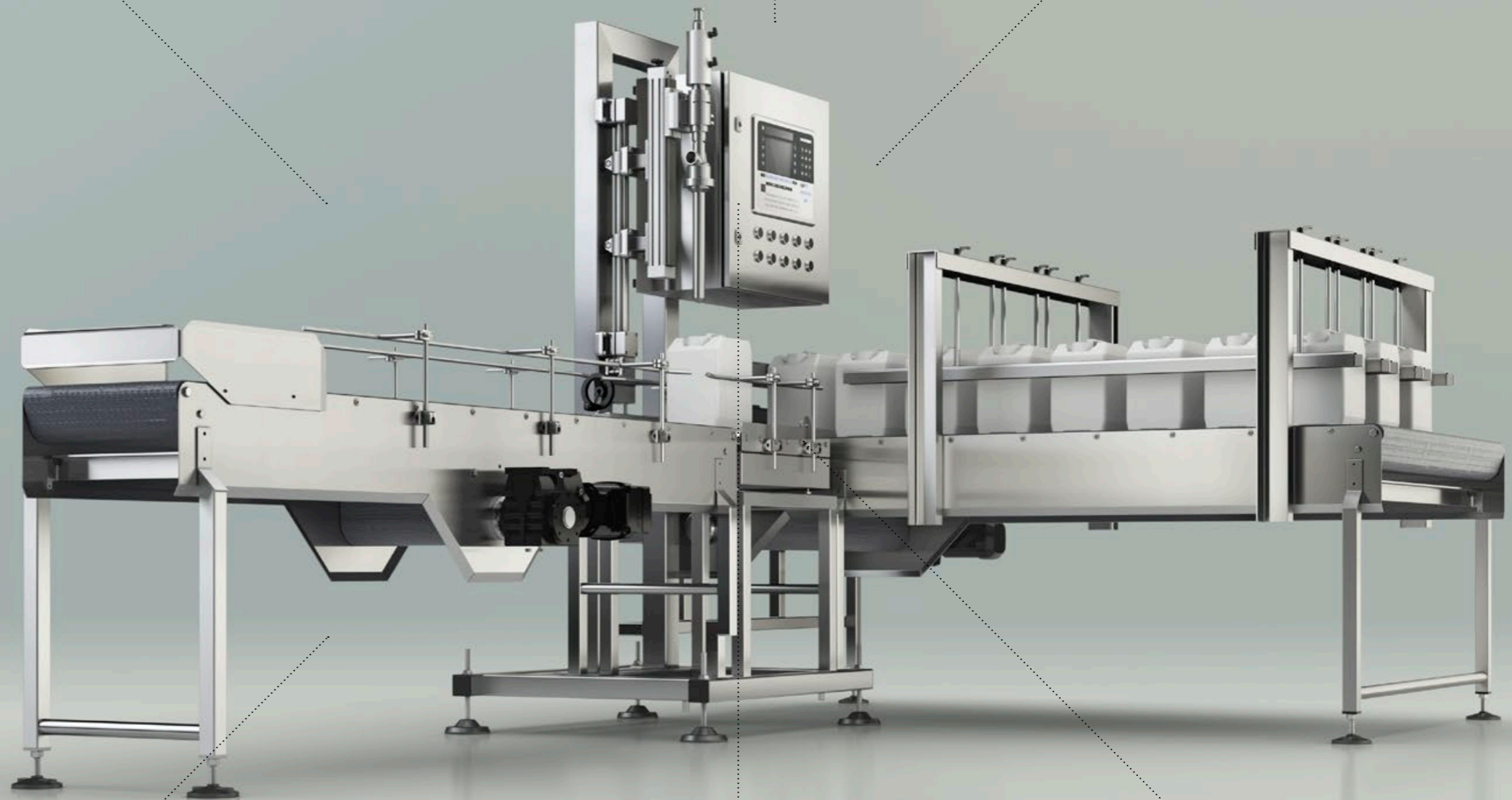
PLC control

This control ensures reliable and fast container transport.



Variable container types

Benefit from maximum flexibility when it comes to container types and sizes. The system with integrated conveyor is suitable for customer-specific canisters, pails and IBCs.



Suitable for Ex zones

The FSL-EVO S is also available as a version for the Ex zones 2/22 and 1/21 and meets ATEX directives with full functionality.



BRAIN2

The new software generation BRAIN2 offers you a new and significantly extended range of functions across products. With BRAIN2 we focus on centralization, easy operation and data security.



Multifunctional positioning unit

For easy handling, the automatic container transport is operated via the system control. The result: optimized filling processes and minimum changeover times.

Custom-fit options



Experienced and close to the industry

Each industry has its special needs. And each customer has different requirements. Therefore, we have developed FSL series models which are ideally suitable for manufacturing pharmaceutical and petrochemical products, paints and lacquers, chemicals, food and construction material. They meet the highest standards in extreme or sensible production environments also in terms of ergonomics, safety and hygiene. Due to our modular system you can individually configure each FSL model to your layout and particular production environment. Always suitable for the liquids to be filled, container types and sizes.

Flexible systems

You can choose from semi-automatic and fully automatic systems of our FSL series. Together with you we configure your tailor-made filling system from numerous modules and options. And this high flexibility is also provided when selecting valves and valve racks, pumps and interfaces, a closing system or handling solution. In order to meet your individual requirements at a maximum, we gladly offer you our engineering services.

Optimized production processes

Networked with industrial software BRAIN2, the iS weighing terminals of our filling systems precisely record dosing parameters and data. You can securely and safely, individually evaluate and manage them. Our BRAIN2 software can be easily integrated in your existing IT system via interfaces. A networked solution for a synchronous work and data flow which optimizes your production: You can, among other things, efficiently label your products with variable data, reliably track or label them for optimal storage or intermediate storage.

Optimum safety

For a smooth production, the models of the FSL series meet highest technological standards in any phase. The systems can be cleaned easily, efficiently and safely. You may choose between Cleaning in Process (CIP), valve racks for which the valves are cleaned outside the system or quick change filling valves. FSL models as Ex versions, different closing systems, drip scoops, gas exhaust hoods or overflow protections round up your safety concept. They protect your staff, products and production facility during filling and transport. And at the same time they meet legal requirements.

Efficient container handling

Full service is a top priority for us. Therefore, we offer you palletizing systems for automatic stacking, unstacking and feeding of your containers which are matching our modern filling systems. Combined with our atest systems for container handling for empty or full containers, you profit from ergonomic filling stations which save time and staff costs. Our fully automatic, multifunctional positioning unit and driven conveyor are available to you.

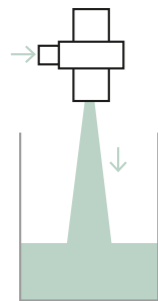
Accurate and fast recording of weight

Our name stands for precise weighing results and efficient processes. We offer you a broad portfolio of high quality and robust industrial Bizerba scales which you may choose from based on your requirements concerning weighing range and weighing accuracy. A verifiable weighing module may also be integrated in your filling system. Combined with our weighing terminals and intelligent software you optimize your production process. You avoid, among other things, overfilling and give-away.

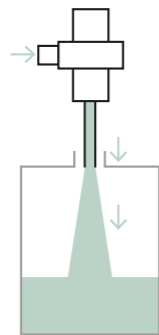
Extremely versatile

With the models of our FSL series you enjoy maximum flexibility. Perfectly tailored to the properties of the products you want to fill, the container type and size, we design your individual filling system with the matching filling valve. Variety which lets you benefit from safe, smooth and efficient processes.

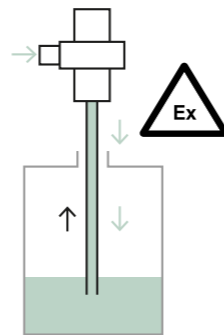
Product-specific filling processes



Above-surface filling
The right alternative for uncritical, non-foaming, viscous products. Suitable containers: Pails or drums with lid, IBCs



Below-bunghole
For uncritical, non-foaming products with low viscosity. Suitable containers: Canisters, pails and drums



Below-surface filling
Ideal for products generating foams or explosive gases. Suitable containers: Canisters, pails, drums, IBCs

Your container options



Canisters
For this container type we offer you our FSL models with below-bunghole or below-surface filling.



Pails
With our above-surface filling you can fill your product quickly and precisely in the open container. Here you benefit from the high throughput of our filling systems.

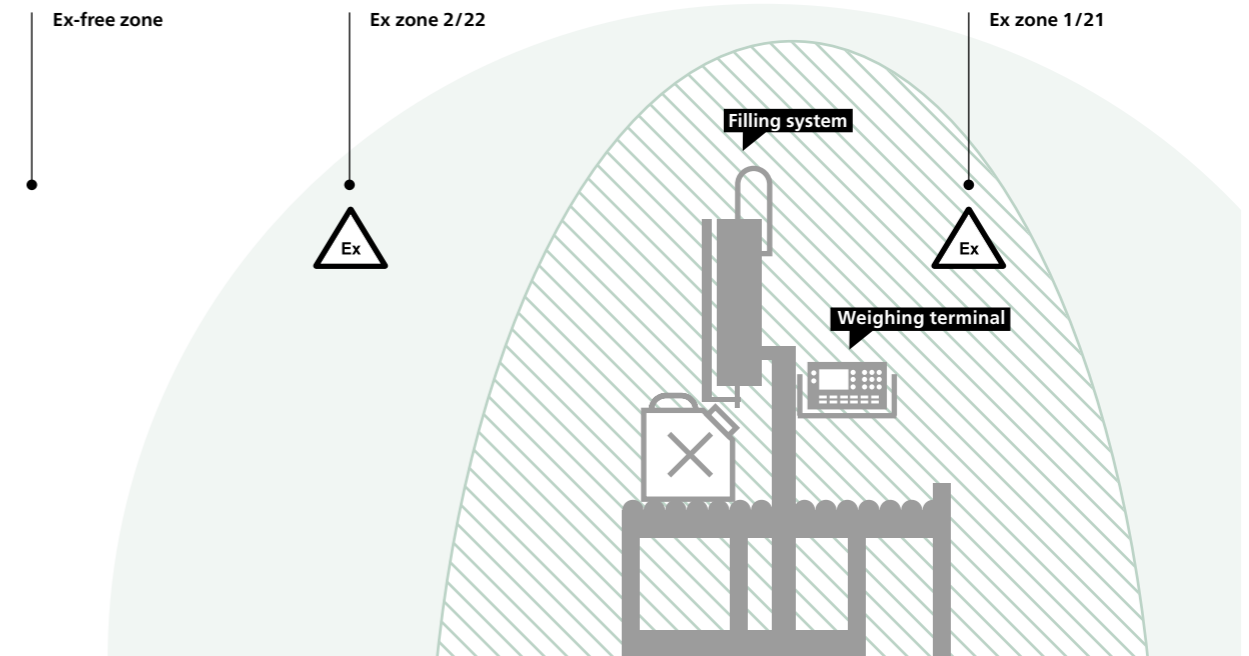


Drums
With our filling systems we offer a suitable filling valve for each drum for optimal below-bunghole or below-surface filling.



IBCs (Intermediate Bulk Container)
Due to the large nominal sizes of our filling valves you benefit from fast and economic filling of your IBCs by below-bunghole or below-surface filling.

Extremely reliable



Ex zone	Production area	Bizerba Products
Ex-free zone	Safe production areas	FSL-ECO S / FSL-PRO S / FSL-PRO M / FSL-EVO S
Ex zone 2/22	Ideal for production areas in which an explosive dust and gas atmosphere would usually not or only briefly occur (normal safety).	FSL-PRO S / FSL-PRO M / FSL-EVO S
Ex zone 1/21	Ideal for production areas in which an explosive dust and gas atmosphere occasionally occurs (high safety).	FSL-PRO S / FSL-PRO M / FSL-EVO S

Full functionality in Ex zone

Specially for industries with production in hazardous areas we designed Ex models for the FSL series. They equally fulfill the demands of your production and also the requirements of the ATEX directive. Currently we offer these filling systems for Ex zones 1/21 and 2/22.

The functionality of these specially developed versions is fully retained in the Ex zone. Based on the desired application you can safely perform

weighing as accurate as 1 g, gentle dosing and filling functions in your production process. Due to numerous interfaces, all Ex models can be easily integrated in existing production and IT networks.

Safe control cabinet solution

Our control cabinet which is suitable for explosive risk areas offers you maximum safety at minimal costs for our semi-automatic filling systems in standard design. Another solution:

Our force-ventilated control cabinet for fully automatic filling systems. This prevents explosive dust and gas atmospheres inside the control cabinet. You remain flexible in terms of selection and installation of the control components and you can even safely integrate such components which are not explicitly produced for the Ex zone.



FSL-ECO S

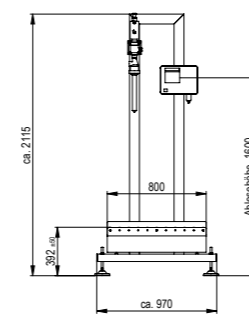
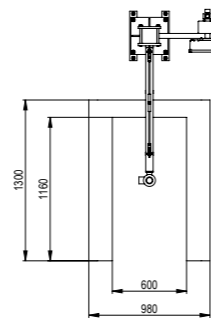
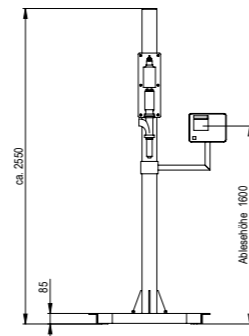
Highlights

- Semi-automatic filling system for all container types
- All technical components are Bizerba Busch originals: Scale, filling control and entire hardware
- Robust industrial design with IP65 protection
- Individual system extension
- High quality at a low price
- Ergonomic filling station

Options

- Non-driven roller conveyor
- Aspiration hood
- Quick change filling valve
- Valve rack: with cleaning possible
- Product hose suspension
- Hand lever below-bunghole
- Grounding clamp without monitoring
- Manual closing systems: Sealing caps, lid roll-in, capping
- Container balancer

Dimensions



FSL-PRO S

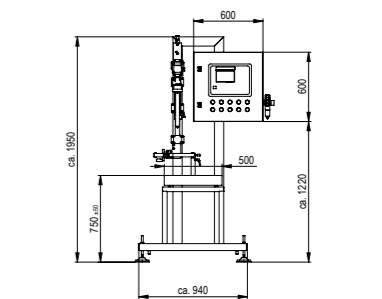
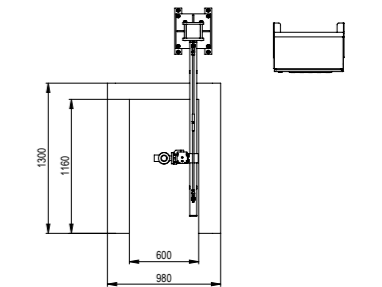
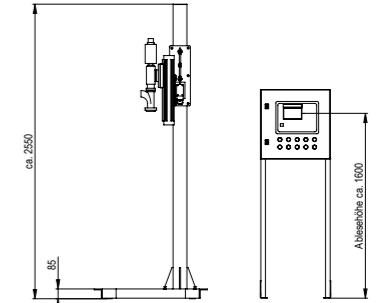
Highlights

- Semi-automatic, flexible all-round filling system for all container types
- All technical components are Bizerba Busch originals: Scale, filling control and entire hardware
- Robust industrial design with IP65 protection
- High-quality modular system allows customer-specific system extension
- Also available as an Ex model for zones 1 and 2
- Ergonomic filling station
- Requires little space
- Safe valve monitoring
- Convenient, pneumatically supported base height adjustment
- Manual labeling with variable data

Options

- Side tables
- Non-driven roller conveyors
- Drop catcher: manual or pneumatic
- Aspiration hood
- Quick change filling valve
- Valve rack: with coding and cleaning
- Closing systems: Sealing caps, lid roll-in/lid press, capping, clinching

Dimensions





FSL-PRO M

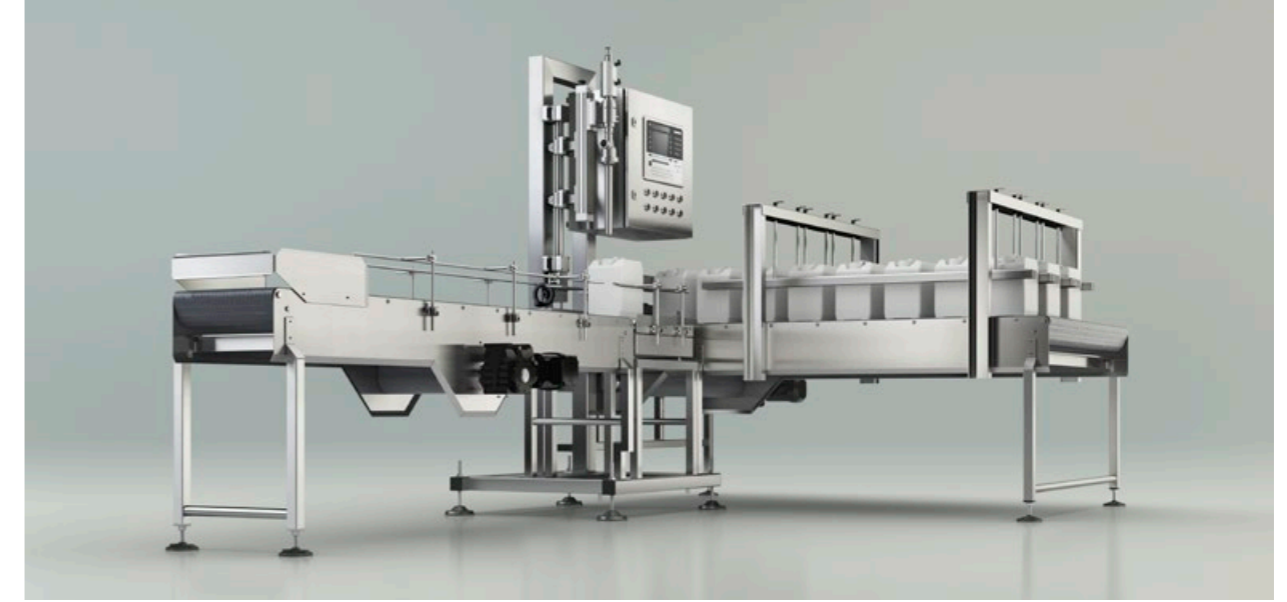
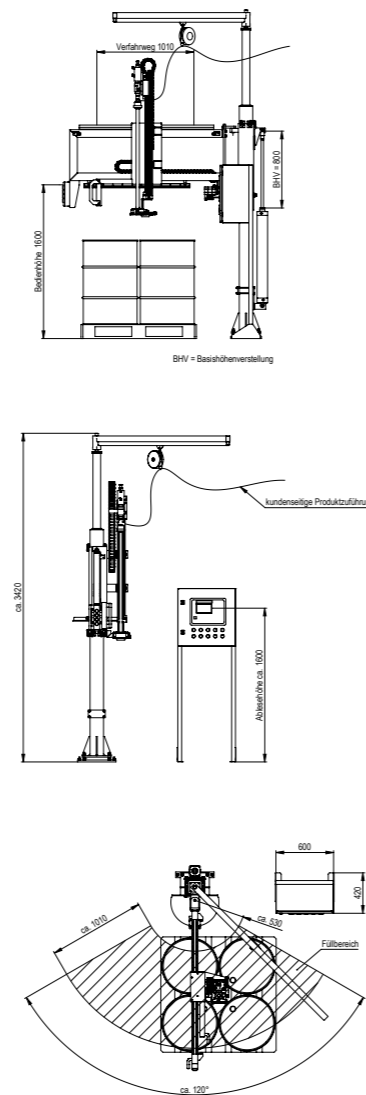
Highlights

- Semi-automatic filling system for all container types and already palletized containers
- Precise filling with multi-interval scale
- All technical components are Bizerba Busch originals: Scale, filling control and entire hardware
- Robust industrial design with IP65 protection
- Also available as an Ex model for zones 1 and 2
- Optimized handling and filling process
- Safe valve monitoring
- Convenient, pneumatically supported base height adjustment
- Manual labeling with variable data

Options

- Dual scale for parallel processes: Filling and weighing with scale 1, closing and conveying with scale 2
- Driven conveyor systems
- Drop catcher: manual or pneumatic
- Aspiration hood
- Quick change filling valves
- Closing systems: Sealing caps, lid roll-in/lid press, capping, clinching
- Additive tare
- Pump control

Dimensions



FSL-EVO S L-shape

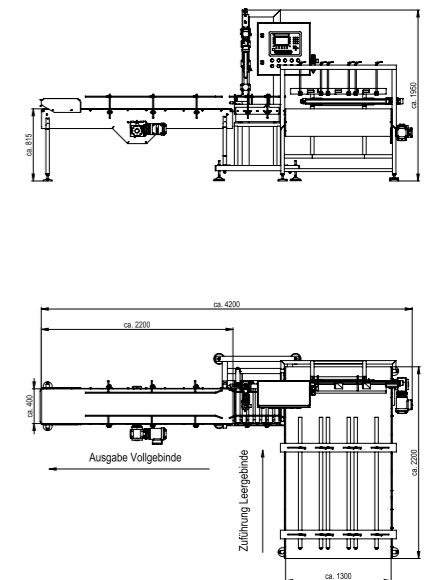
Highlights

- Fully automatic filling system for pails and canisters
- Compact L-shaped system arrangement
- Empty container section with driven conveyor belt
- Loading section length: 2.200 mm for 36 containers with each 20 liters (example)
- Variable setting of lateral guides: 3 container sizes possible
- Automatic positioning unit for lateral transfer of containers to the filling point
- Buffer section with conveyor belt for full containers
- Flexible design of entire system, modular extension possible

Options

- Efficient processes without manual handling of full containers
- Automatic labeling with variable data
- Pneumatically supported base height adjustment

Dimensions





FSL-EVO S

U-shape

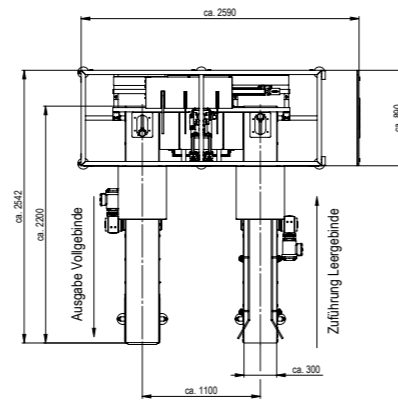
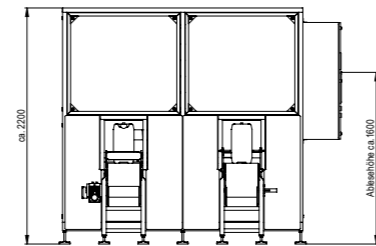
Highlights

- Fully automatic filling system for pails and canisters
- Compact U-shaped system layout
- Full and empty container section with driven conveyor belt
- Variable setting of lateral guides: 3 container sizes possible
- Multifunctional positioning unit for lateral transfer of containers to the filling point
- Optimal safety due to special enclosure with secured access door
- Modular extension possible

Options

- Efficient processes without manual handling of full containers
- Automatic labeling with variable data
- Pneumatically supported base height adjustment

Dimensions



FSL-EVO S

IBC

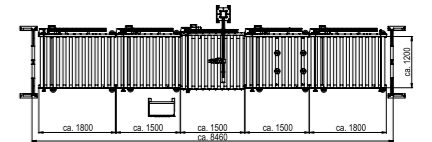
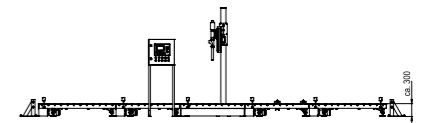
Highlights

- Fully automatic filling system for pails and canisters
- Driven roller conveyor segments with sensors for standard IBCs
- Empty container section for IBCs
- Roller conveyor in filling section with integrated Bizerba load receptor and sensors
- Full container section for two IBCs
- Collision protection at feeding and removal point of IBCs
- Flexible positioning of control cabinet

Options

- Efficient processes without manual handling of full containers
- Automatic labeling with variable data
- Pneumatically supported base height adjustment

Dimensions





BRAIN2 Modules

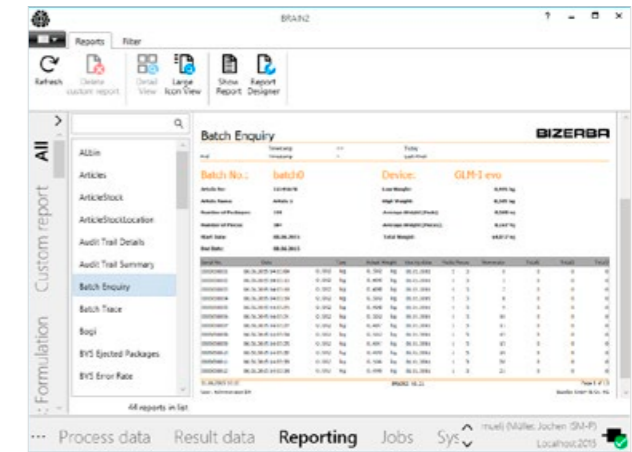
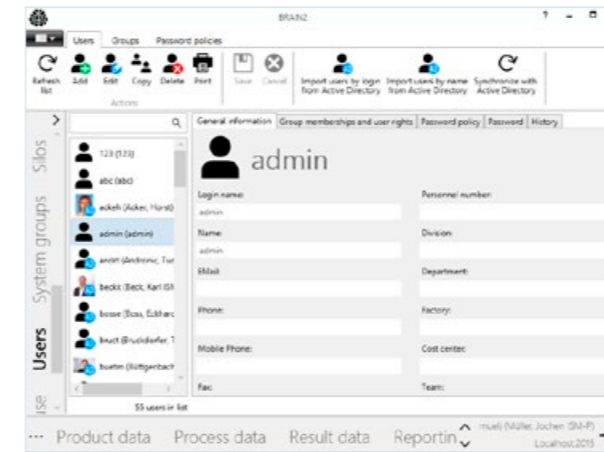


**BRAIN2
Capture**

These and many other module solutions can be found on the Internet at www.bizerba.com



**BRAIN2
Safety_Service**



Perfectly networked with BRAIN2

Our FSL series offers more possibilities. Benefit from intelligent networking which you can use to make your processes more efficient. Before, during and after production. Our solution: BRAIN2. The new software generation.

A synchronous work and data flow from goods receiving to shipping. The new software generation BRAIN2 makes it possible. In the context of industry 4.0 it collects all relevant quality parameters of your production. With the modules of the intelligent platform you can monitor, analyze and document any process phase. The result: You benefit

from maximum transparency allowing you to optimize your production. Your advantages: With BRAIN2 you increase the quality of your data. Data is reliably recorded, saved and evaluated. This is an optimal basis to fully utilize your production system, to simplify processes and to maintain a constantly high product quality.

Tailor-made solutions

BRAIN2 is a dynamic software platform with a modular design. With this innovative concept it unites the central functions reporting, device management, user management and audit trail system. Our applications team customizes the functions to your needs and your business. The concept of special applications is also possible.

Efficient handling

BRAIN2 easily and conveniently integrates in your existing IT system. The central, server-based system offers you an uniform graphical user interface. Via application selection you can customize the user-friendly user interface and arrange it clearly to your needs. BRAIN2 lets you centrally define and manage users and groups. Via Active Directory or LDAP they can be transferred to higher-level systems. Create reports by pressing a button. You choose from a wide range of formats and can customize BRAIN2 reports with the Report Designer. Automatic reports can also be generated. Similarly convenient is the integration and management of the production

equipment. You simply enter IP and device name. The central device overview and configuration via BRAIN2 simplify use and remote service of the devices.

Convenient operation

BRAIN2 makes creating reports very easy. In future you just press a button to create them. You choose from a wide range of formats and can customize BRAIN2 reports with the Report Designer. Automatic reports can also be generated. Similarly convenient is the integration and management of the production equipment. You simply enter IP and device name. The central device overview and configuration via BRAIN2 simplify use and remote service of the devices.

Your advantages with BRAIN2

- Tailor-made solutions due to a modular design of the software platform and the adjustments of the functions by our applications team
- Efficient handling during the integration in your IT network, simple reporting and central management
- Easy initial training of your staff carried out by our training team

For more information on BRAIN2, please watch our video via:



All possibilities at a glance

	Filling							Valve rack				Valve		Pumps and signal exchange					Closing systems			Conveying				Additional Options											
Products	Drop catcher, mechanical	Drop catcher, pneumatic	Aspiration hood	Grounding clamp	Grounding clamp w/o monitoring	Hand lever below bunghole	Product hose suspension	Valve rack	Valve rack with encoding	Valve rack with cleaning	Valve cleaning CIP	Valve cleaning hand lever	Inerting	Heated filling valves	Quick change filling valve	Overfill protection, optical	Pump	Pump control	Signal exchange with PPS	Lid push-in	Lid roll-in	Clinching	Manual capping	Automatic capping	Sealing caps, manual	Sealing caps, automatic	Non-driven roller conveyor(s)	Side tables	Mobile chassis	Manual labeling with variable data (according to arrangement)	Automatic labeling with variable data driven conveyor systems	automatic labeling with variable data height adjustment	Container balancer	Dual scale			
FSL-ECO S																																					
Canister	x	x	⊖	⊖	x	⊖	⊖	⊖	x	⊖	x	⊖	x	x	⊖	x	x	x	x	x	x	x	⊖	x	⊖	x	⊖	x	⊖	x	x	x	x	⊖	x		
Pail	x	x	⊖	⊖	x	⊖	⊖	⊖	x	⊖	x	⊖	x	x	⊖	x	x	x	x	⊖	⊖	x	x	x	x	x	⊖	x	⊖	x	x	x	x	⊖	x		
Drum	x	x	⊖	⊖	x	⊖	⊖	⊖	x	⊖	x	⊖	x	x	⊖	x	x	x	x	x	x	⊖	⊖	x	x	x	●	x	⊖	x	x	x	x	x	x		
IBC	x	x	⊖	⊖	x	x	⊖	⊖	x	⊖	x	⊖	x	x	⊖	x	x	x	x	x	x	x	x	x	x	x	x	x	x	x	x	x	x	x	x		
FSL-PRO S																																					
Canister	⊖	⊖	⊖	⊖	⊖	x	⊖	⊖	⊖	⊖	⊖	⊖	⊖	⊖	⊖	⊖	⊖	⊖	⊖	x	x	x	⊖	x	⊖	x	⊖	⊖	⊖	⊖	x	x	⊖	⊖	x		
Pail	⊖	⊖	⊖	⊖	⊖	x	⊖	⊖	⊖	⊖	⊖	⊖	⊖	⊖	⊖	x	⊖	⊖	⊖	⊖	⊖	x	x	x	x	x	⊖	⊖	⊖	⊖	x	x	⊖	⊖	x		
Drum	⊖	⊖	⊖	⊖	⊖	x	⊖	⊖	⊖	⊖	⊖	⊖	⊖	⊖	⊖	⊖	⊖	⊖	⊖	x	x	⊖	⊖	x	x	x	●	x	⊖	⊖	x	x	x	x	x		
IBC	⊖	⊖	⊖	⊖	⊖	x	⊖	⊖	⊖	⊖	⊖	⊖	⊖	⊖	⊖	x	⊖	⊖	⊖	x	x	x	x	x	x	x	x	x	x	⊖	x	x	x	x	x		
FSL-PRO M																																					
Canister	⊖	⊖	⊖	⊖	⊖	x	⊖	⊖	⊖	⊖	⊖	⊖	⊖	⊖	⊖	⊖	⊖	⊖	⊖	x	x	x	⊖	x	⊖	x	x	x	x	⊖	x	x	⊖	⊖	⊖		
Pail	⊖	⊖	⊖	⊖	⊖	x	⊖	⊖	⊖	⊖	⊖	⊖	⊖	⊖	⊖	x	⊖	⊖	⊖	x	x	x	x	x	x	x	x	x	x	⊖	x	x	⊖	⊖	⊖		
Drum	⊖	⊖	⊖	⊖	⊖	x	⊖	⊖	⊖	⊖	⊖	⊖	⊖	⊖	⊖	⊖	⊖	⊖	⊖	x	x	⊖	⊖	x	x	x	x	x	x	⊖	x	x	x	x	⊖		
FSL-EVO S																																					
Canister	⊖	⊖	⊖	⊖	⊖	x	⊖	⊖	⊖	x	⊖	⊖	⊖	⊖	⊖	⊖	⊖	⊖	⊖	x	x	x	⊖	⊖	⊖	⊖	⊖	x	x	⊖	⊖	⊖	⊖	⊖	x		
Pail	⊖	⊖	⊖	⊖	⊖	x	⊖	⊖	⊖	x	⊖	⊖	⊖	⊖	⊖	x	⊖	⊖	⊖	⊖	⊖	x	x	⊖	x	x	⊖	x	x	⊖	⊖	⊖	⊖	⊖	x		
IBC	⊖	⊖	⊖	⊖	⊖	x	⊖	⊖	⊖	x	⊖	⊖	⊖	⊖	⊖	x	⊖	⊖	⊖	x	x	x	x	x	x	x	x	x	x	⊖	⊖	⊖	⊖	⊖	x		

Key

- standard
- ⊖ optionally applicable
- x unsuitable for this purpose



Our service – professional on-site support

We supplement the use of our filling systems with optimal service. Benefit from our experience and industry know-how. Our highly qualified service experts are at your service nationwide.

In order to obtain the maximum from your investments we are there for you with a multi-level service. This includes advice, start-up and installation of the filling systems as well as other services. Our perfectly matched modules ensure continuous availability.

Service modules

- Individually agreed service contracts
- Start-up including initial training and initial installation
- 24/7 service contract, optional
- Full support (spare parts, technical competence and on-site support)
- Large nationwide network of service experts who are quickly at your service and on-site
- A broad range of care and cleaning products
- Service hotline
- Customer training

Information to suit your every need

There are various quick and effective routes to finding the perfect solution for your company. Whether you would like to contact us online or prefer to arrange a face-to-face meeting, Bizerba Busch is always happy to help.

In person

If you would like to set up a personal meeting to discuss your on-site circumstances and possibilities, please contact us directly. Our customer advisors are always on hand to assist you, from the initial idea to detailed planning and from implementation to staff training. You can find details of how to contact us on the back page of this brochure.

for yourself thanks to videos and 360° animations. Simply visit our website to see more:

www.bizerbabusch.ch

Would you like to know more?

Are you keen to obtain more detailed information about Bizerba's products? If so, please do not hesitate to contact us. Whether you require scale drawings, technical details or interface specifications, we're happy to advise you.

Online

The Bizerba website provides a quick, easy and focused overview of all our product solutions as well as relevant topics relating to filling, weighing, packaging and labeling. You can even experience our solutions from all angles 'virtually'

Members of the Bizerba Group

Bizerba SE & Co. KG

Wilhelm-Kraut-Straße 65
72336 Balingen
Germany

T +49 7433 12-0
F +49 7433 12-2696
info@bizerba.com

www.bizerba.com

Bizerba USA Inc.

1804 Fashion Court
Joppa, MD 21085
USA

T Office +1 732 565-6000
T Service +1 732 565-6001
F +1 732 819-0429
us.info@bizerba.com

www.bizerbausa.com

Bizerba UK Limited

2-4 Erica Road
Stacey Bushes
Milton Keynes
Buckinghamshire
MK12 6HS
UK

T +44 1908 6827-40
F +44 1908 6827-77
sales@bizerba.co.uk

www.bizerba.com

Bizerba Canada Inc.

2810 Argentia Road #9
Mississauga,
Ontario L5N 8L2
Canada

T +1 905 816-0498
F +1 905 816-0497
ca.info@bizerba.com

www.bizerba.ca

V/1300en © 1st edition. All rights reserved. Subject to modifications. Deviations in color, printing errors due to the photographic material or printing, or changes in construction and model are reserved.

