

Fact Sheet

VARICON+

BIZERBA

This system won't miss anything ... VARICON+ detects all metal contaminants even when enclosed in the product (steel, s/s, aluminum, ...). For packaged or unpackaged piece goods in dry or in wet areas, with the flexibility of the VARICON+ you are on the safe side.



More information
High performance
with a wide range of
solutions and options.

Specifications	Facts	Details
Maximum belt load	20 kg 50 kg	Up to a belt width of 400 mm As from a belt width of 500 mm
Use	<ul style="list-style-type: none"> – packaged products – unpackaged products – piece goods 	non-metallic
Product temperature	-20° to +65°	
Ambient conditions	-10° to +40° 25% to 85% rF, non-condensing	
Mechanical design	<ul style="list-style-type: none"> – Conveyor belt and metal detector – Open frame construction – Drive, guide and tension rollers – Drum motor thermally monitored – TPU conveyor belt – Metal detector 	<ul style="list-style-type: none"> – Stainless steel 1.4301 (AISI 304), glass beaded finish – Four height adjustable feet and fixing holes entirely made of stainless steel 1.4301 (AISI 304), glass beaded finish – Stainless steel 1.4301 (AISI 304) – In white FDA quality – For product centering +/-20mm height adjustable via exchange of mounting rails
Electrical design	<ul style="list-style-type: none"> – Combined control and operating unit for conveyor belt and metal detector – Open wiring within conveyor belt frame – System ON/OFF switch – Conveyor belt ON/OFF switch – Emergency stop switch 	<ul style="list-style-type: none"> – For metal detection set to belt stop by factory – Separate
Mains cable	1.8 m	5-pin CEE connector (6h 3L+N+PE)
Operating voltage	230 VAC	+/- 10% 50/60 Hz, single phase
Power consumption	Up to 2.0 A Up to 4.5 A	Up to a belt width of 400 mm As from a belt width of 500 mm
Motor power	120 W 150 - 370 W	Up to a belt width of 400 mm As from a belt width of 500 mm

Metal detector	100 W	
Protection class	Version according to IP65, NEMA 4	
Conveyor belt speeds	0.2 m/sec. 0.4 m/sec. 0.6 m/sec. 1.0 m/sec.	Ex factory firmly adjustable from -60% to +30%.
Options	Facts	Details
External signal lamp	Error displayed Error and metal display	
External signal horn	Error displayed Error and metal display	
External signal combination	Error displayed Error and metal display	Lamp and horn are used
Blue flashing light	For Audit Check	When Audit Check is due, the lamp is active
Conveyor speeds	Variable, depending on the product	
Light sensor on feeding belt	For monitoring of products	For counting of products
Interfaces	RS232 RS485 Ethernet (TCP/IP) WLAN Profibus	
Lateral guide bars	For alignment of products	Height = 50 mm
Mobile conveyor belt	Four lockable guide rollers	For flexible use of the system
Protection class	IP66/69	Special version Only applies to tunnel detector and conveyor belt, signal lamp, for example, can only be IP65.

Infographic

Varicon+W with linked belt
for inspection of packaged piece goods
in wet areas.



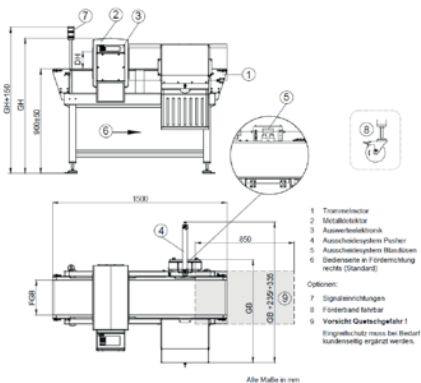
Symbols



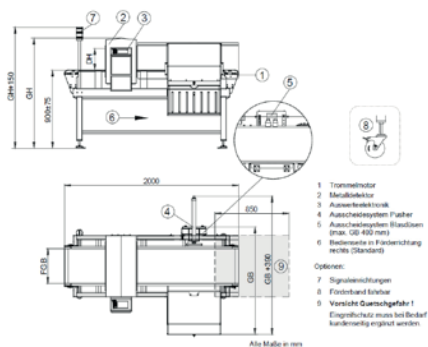
Protection
class IP65

Dimensions

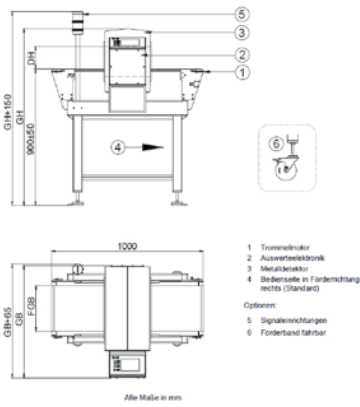
Dimensions size 1 with search coil GLS
– belt width 200 - 300 mm



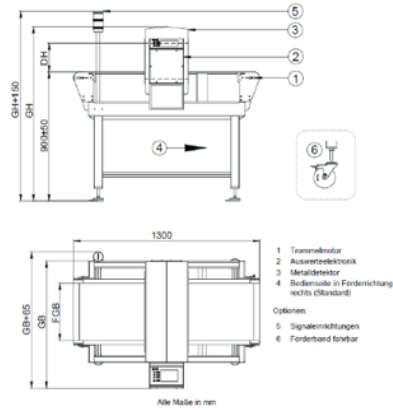
Dimensions size 2 with search coil GLS
– belt width 400 - 500 mm



Dimensions basic version with search coil GLS
 – belt width 200 - 300 mm



Dimensions basic version with search coil GLS
 – belt width 400 - 500 mm



Bizerba SE & Co. KG
 Wilhelm-Kraut-Straße 65
 72336 Balingen
 Germany
 T +49 7433 12-0
 F +49 7433 12-2696
 marketing@bizerba.com

www.bizerba.com