

Fact Sheet

iL Special 450WSF/MP

BIZERBA

Integrated in the automatic overhead track system the conveyORIZED overhead rail scale iL Special 450WSF/MP shows all its strengths: A robust design, quick and precise weighing results and a high throughput.



More information
High performance
with a wide range of
solutions and options.

Specifications	Facts	Details
Weighing ranges	200 kg dynamic 300 kg static	Scale interval 0.2 kg
Load cell	3 strain gauge load cells	Bizerba bending ring BR 500 C3
Dimensions	Length weighing rail / rail cut-out	560 mm / 660 mm 660 mm / 760 mm 710 mm / 810 mm 870 mm / 970 mm
Materials	Hot-dip galvanized construction components Functional parts and fixing parts	Steel hot-dip galvanized Stainless steel
Load capacity	450 kg	
Tubular rail connection	Steel tube Steel tube with plastic interior	
Protection type	IP67 IP54	Scale and conveyer Drive motor
Ambient temperature	Operation: Storage:	-10 °C to +40 °C -50 °C to +85 °C
Accuracy class	Class III	
Options	Facts	Details
Special dimensions	on request	
Further tubular rail systems	on request	
Light sensors	Version with one or two light sensors	
Terminals	Weighing terminal iS30 application terminal iS50 each with Dynamic weighing license	

Infographic

Weighing range	Procedure		Metrologically approved interval	Not metrologically approved interval	Length weighing rail (in mm)	Load cell	Version	
	static	dynamic					partially stainless steel	hot-dip galvanized
200 kg	-	X	0.2 kg	-	560/660/ 710/870		X	X
200 kg	-	X	-	0.2 kg	560/660/ 710/870	BR 500 C3	X	X
300 kg	X	-	0.2 kg	-	560/660/ 710/870		X	X
300 kg	X	-	-	0.2 kg	560/660/ 710/870		X	X

Symbols



Protection
Class IP67



Strain gauge



Multipoint

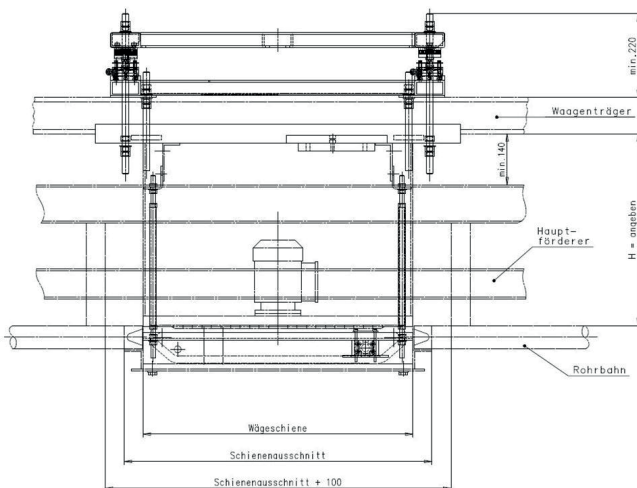


Dynamic
weighing

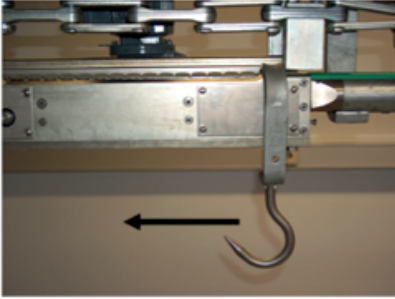


Stainless
steel

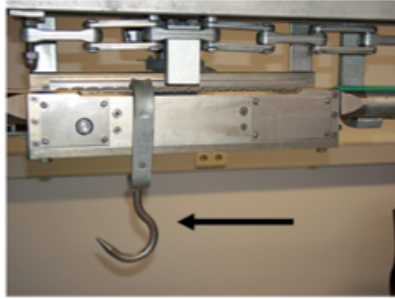
Dimensions



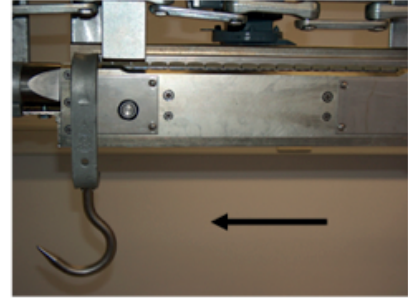
Hook is transported onto the WSF and taken over by the WSF chain.



Hook and pick-up are free. Weight value is dynamically determined.



Hook waits at the end of the WSF for the pick-up of the main conveyor.



Bizerba GmbH & Co. KG

Wilhelm-Kraut-Straße 65
72336 Balingen
Germany
T +49 7433 12-0
F +49 7433 12-2696
marketing@bizerba.com

www.bizerba.com